

COMUNE DI CARMIGNANO

II VARIANTE ADOTTATA D.C.C. 56/2019
PIANO STRUTTURALE APPROVATO D.C.C. 40/2010
REGOLAMENTO URBANISTICO APPROVATO D.C.C. 24/2015
I VARIANTE CONTESTUALE D.C.C. 41/2017

INDIVIDUAZIONE OSSERVAZIONI

Dott. Arch. Alessandro Bertini

Collaborazione

Dott. Arch. Bianca Ballestrero

Geom. Lucia Masetti

RESPONSABILE DEL PROCEDIMENTO

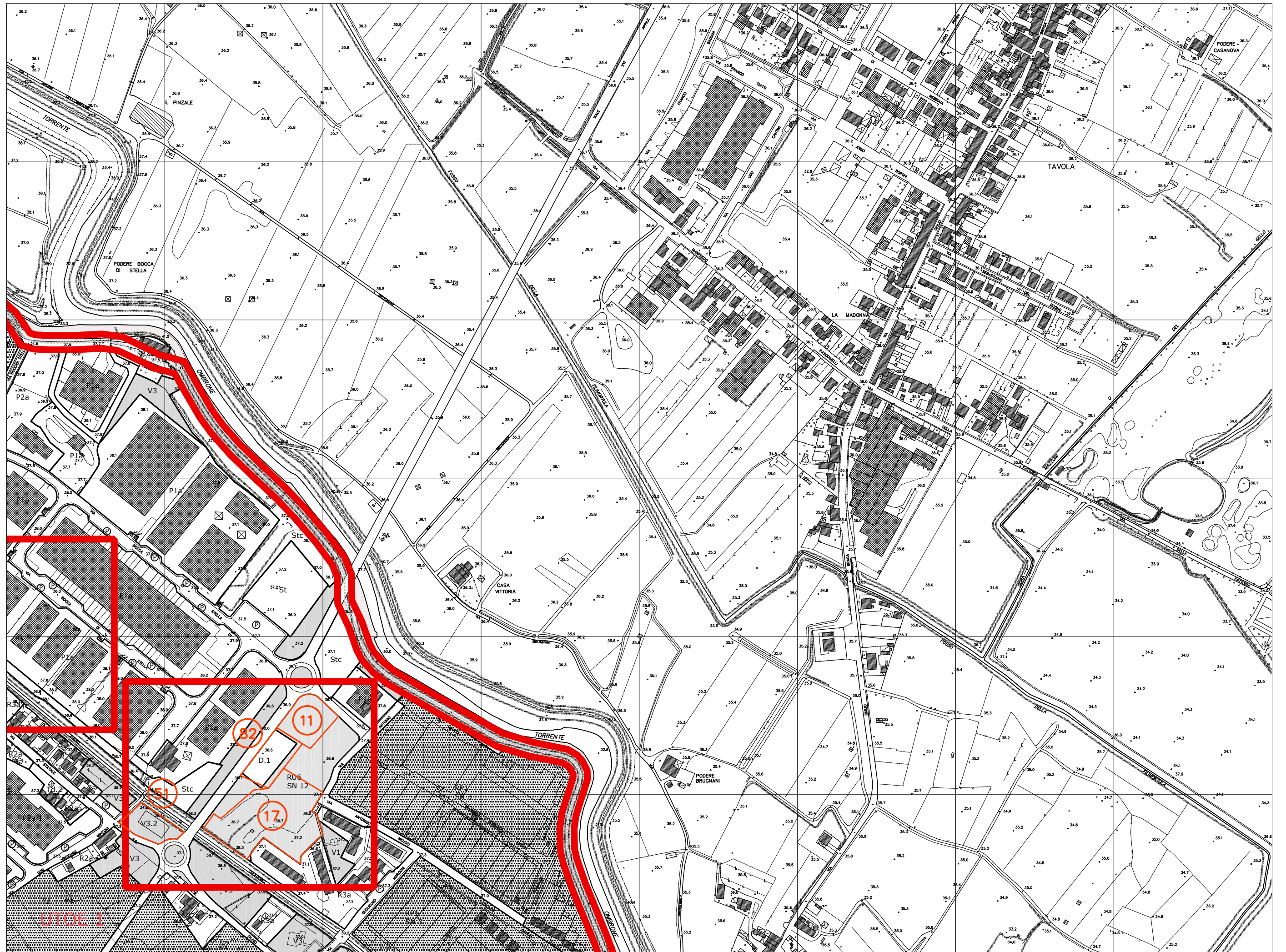
Dott. Ing. Leonardo Mastropieri



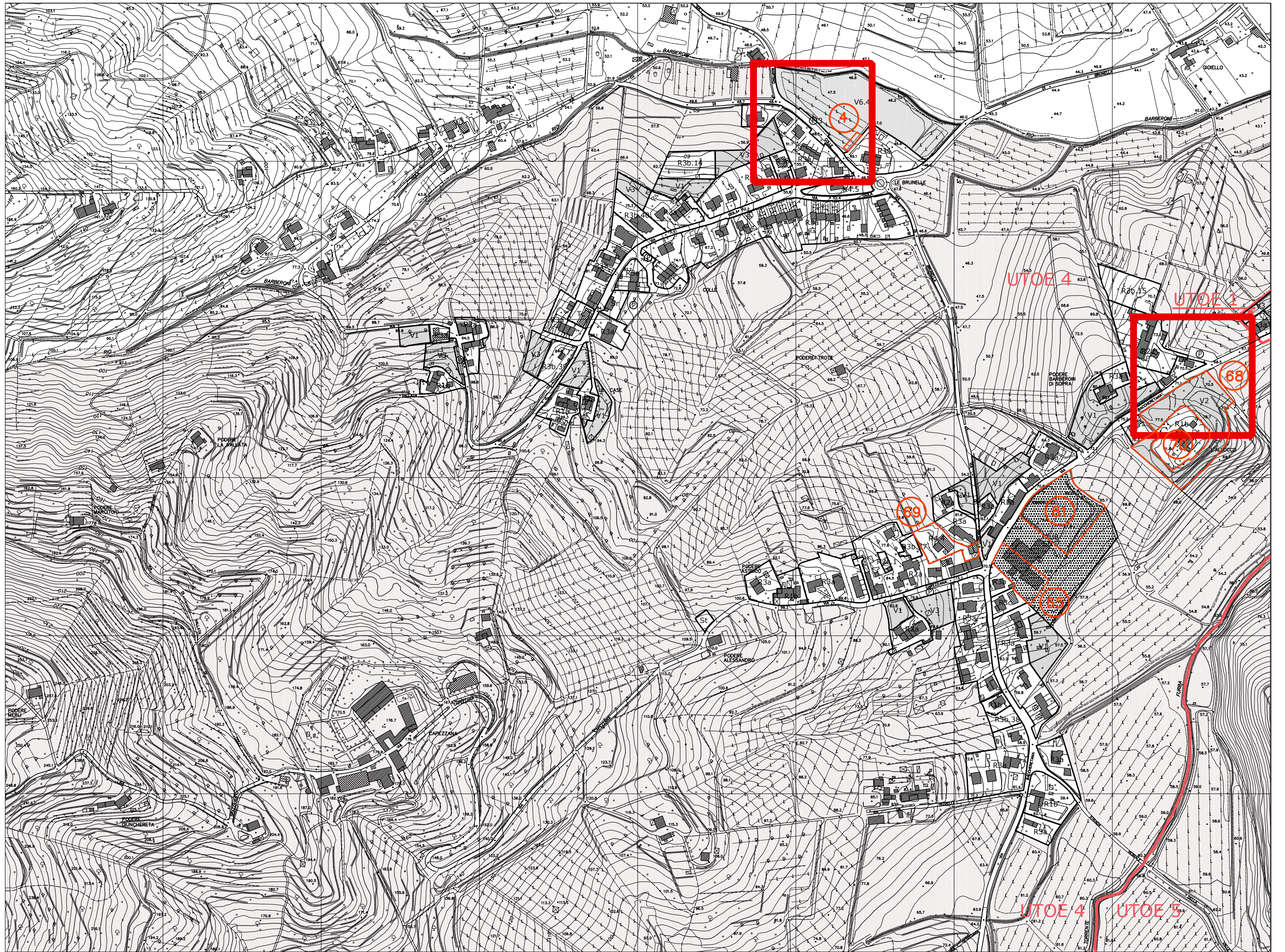
Novembre 2020

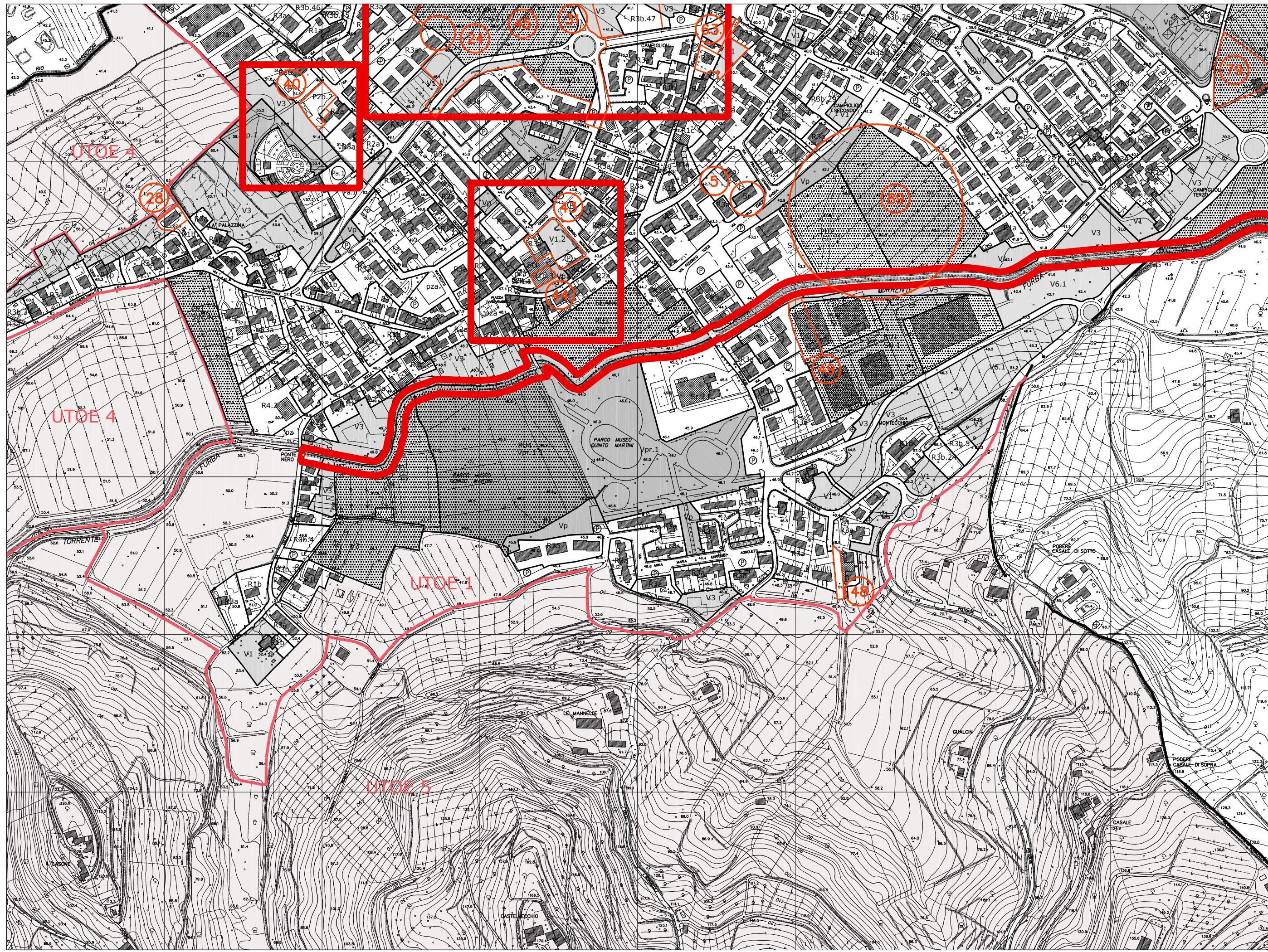
N. OSSERVAZIONE	ELABORATI
16 - 50 - 80	P01
31 - 45	P01/P04
11* - 17* - 51 - 82	P02
4 - 65 - 68 - 69 - 70 - 81	P03
5 - 24 - 28 - 40 - 43 - 44* - 48 - 49 - 63 - 79 - 89	P04
---	P05
19 - 20 - 22 - 46 - 67 - 92	P06
8	P08
72	P09/P10
6 - 26 - 30 - 52 - 59	P10
34 - 78*	P10/P11
66	P11
77 - 91	P12/P13
2 - 12* - 14 - 23 - 25 - 38 - 62* - 73 - 87 (2)	P13
---	P14
10	P15
3 - 53	P16
9 - 55	P17
60 - 61 - 76 - 85	P18
7 - 56 - 74	TA - stralcio_B
12* - 47	TA - stralcio_C
1 - 13 - 32 - 33 - 57 - 58 - 71	TA - stralcio_D
1,15,18,21,27,29,32,35,36,37,39,41,42,54, 62*,64, 74,75,83*,84,86,88,90,92,93,94,95,96,97,98*	normativa

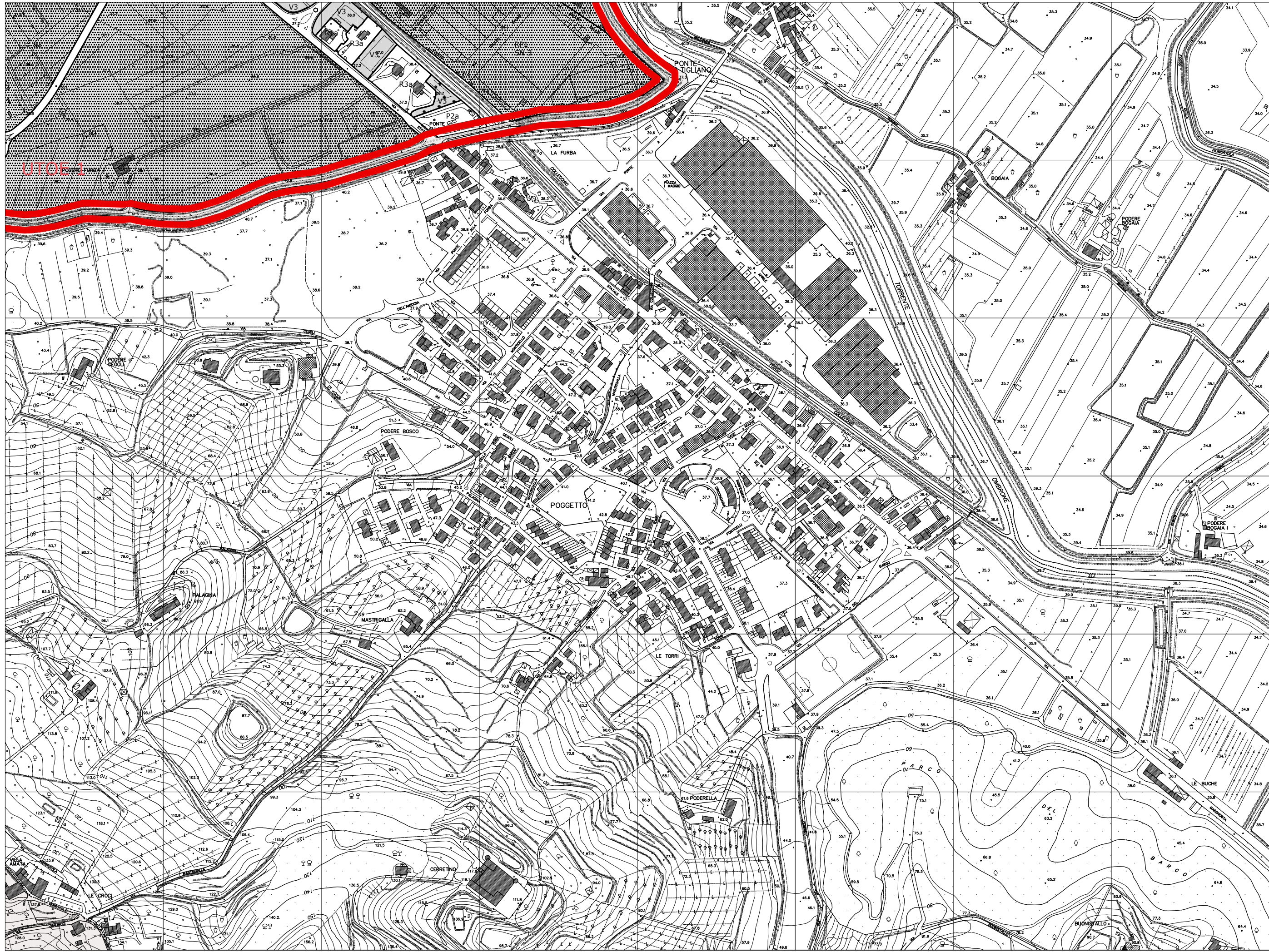
N* Le previsioni di cui ai punti in osservazione sono sospese a seguito di avvio di nuova procedura ai sensi degli Art.17 e 19 della L.R. 65/2014.

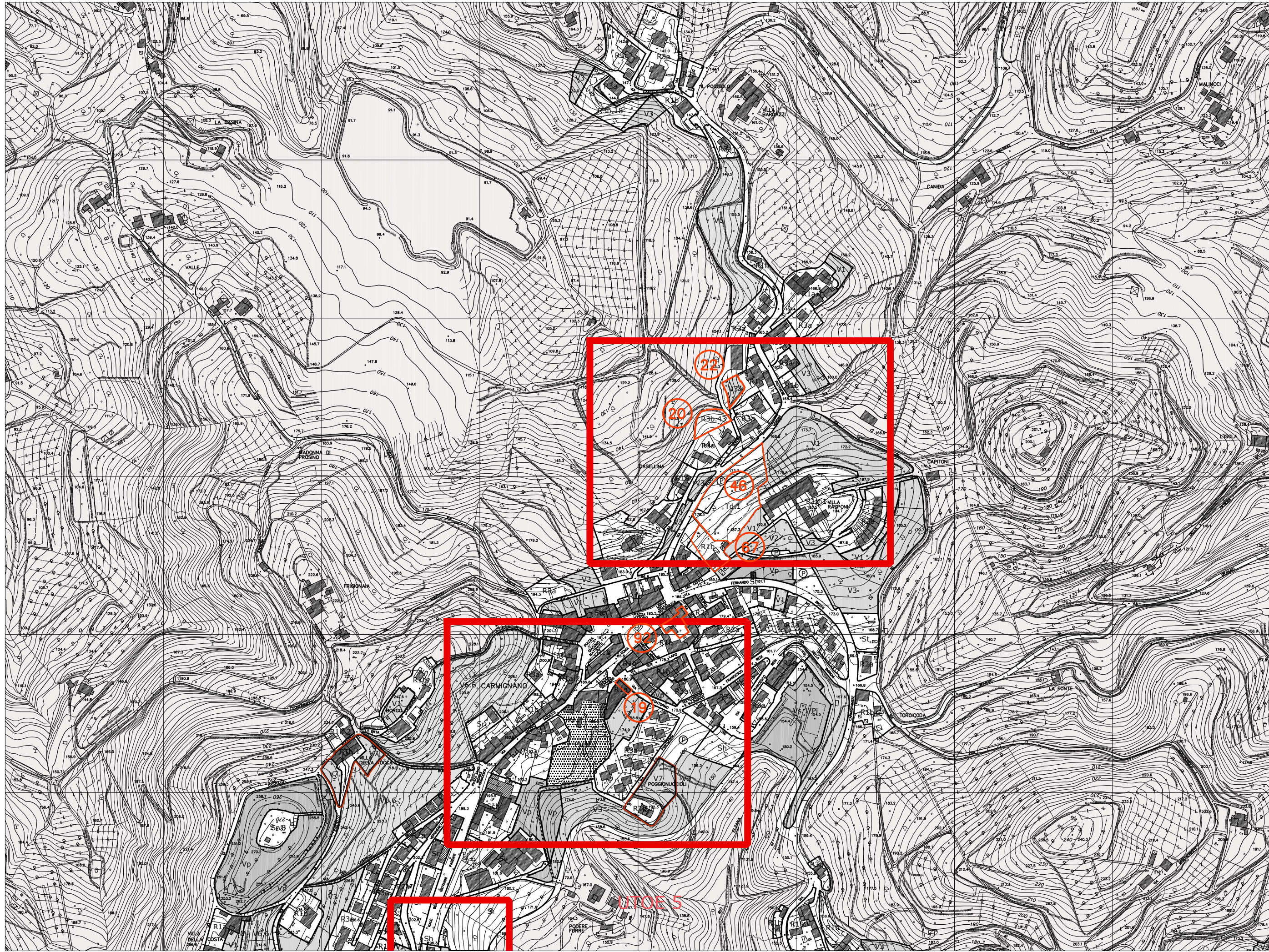


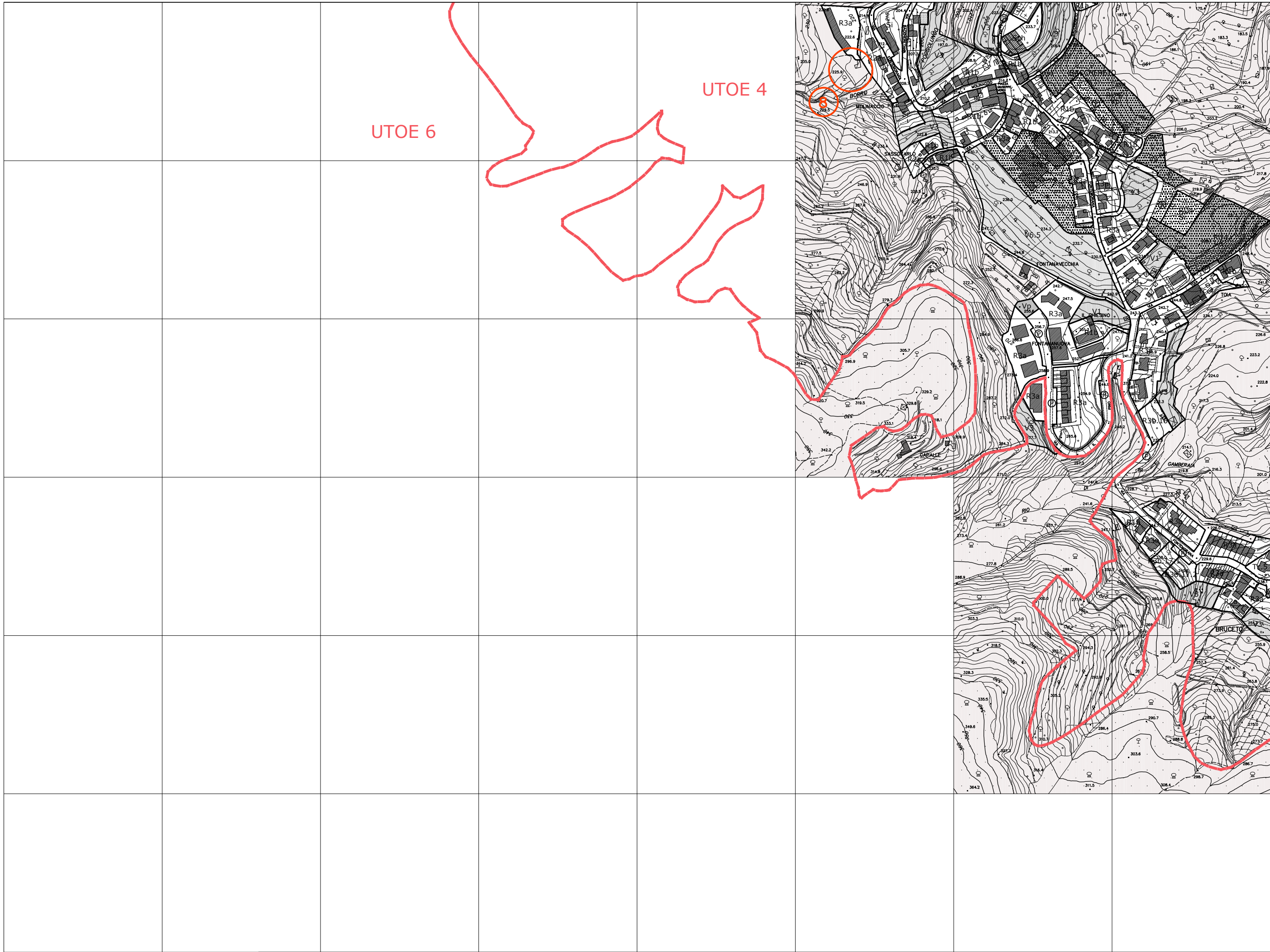
UTOE 1











fuori scala

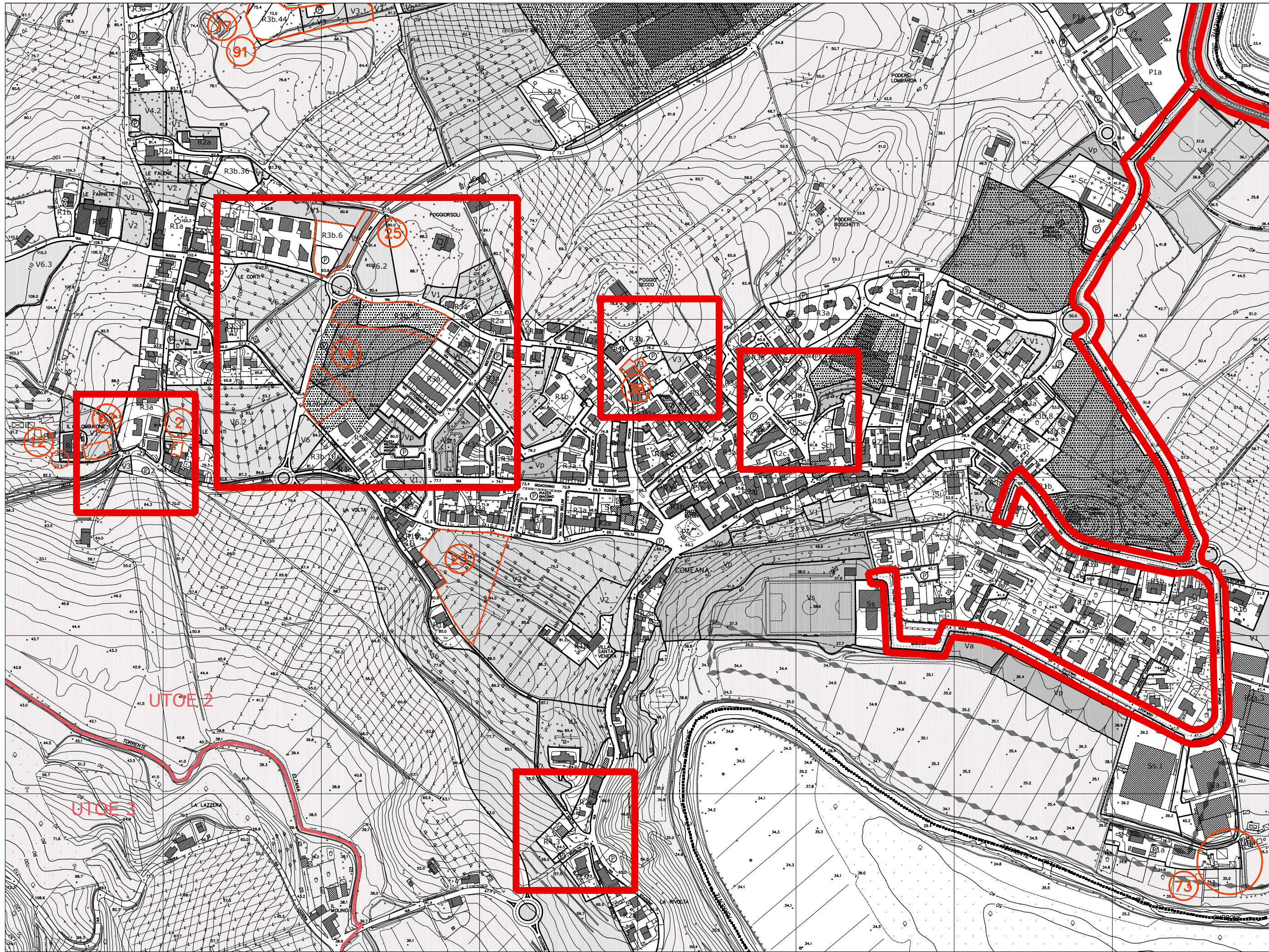
RU - P08 - BACCHERETO









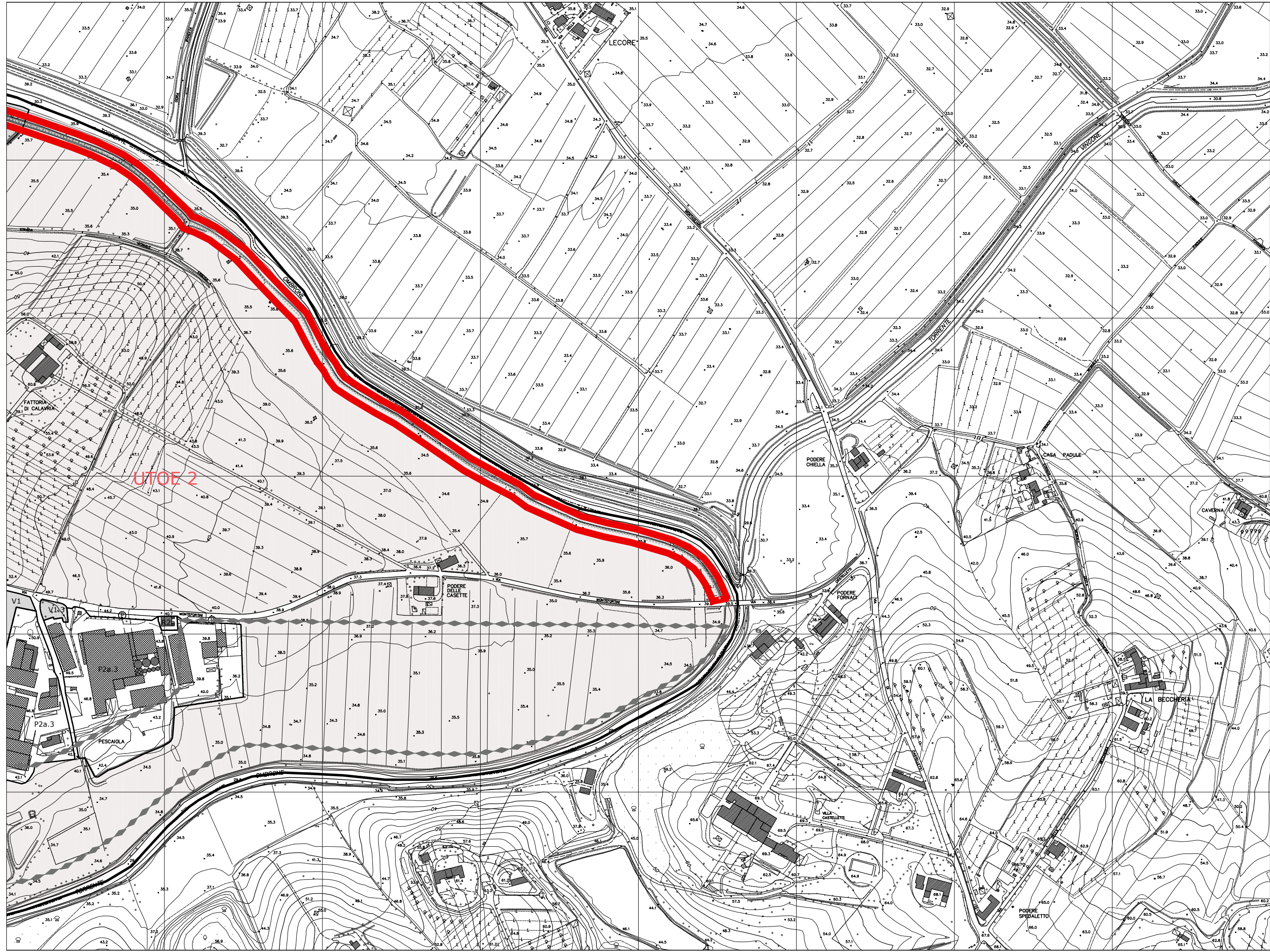


UTOE 2

UTOE 3

fuori scala

RU - P13 - COMEANA CENTRO

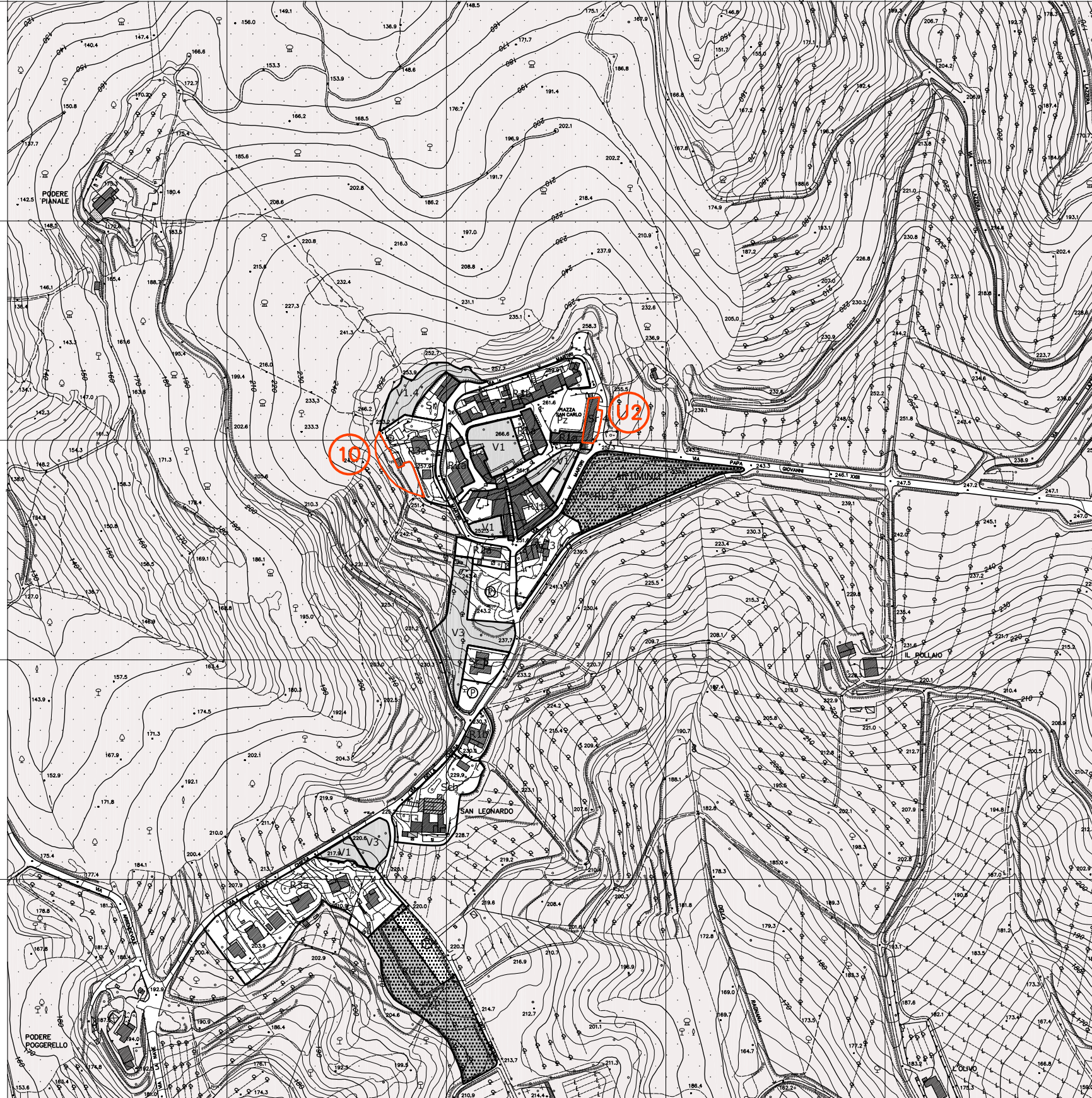


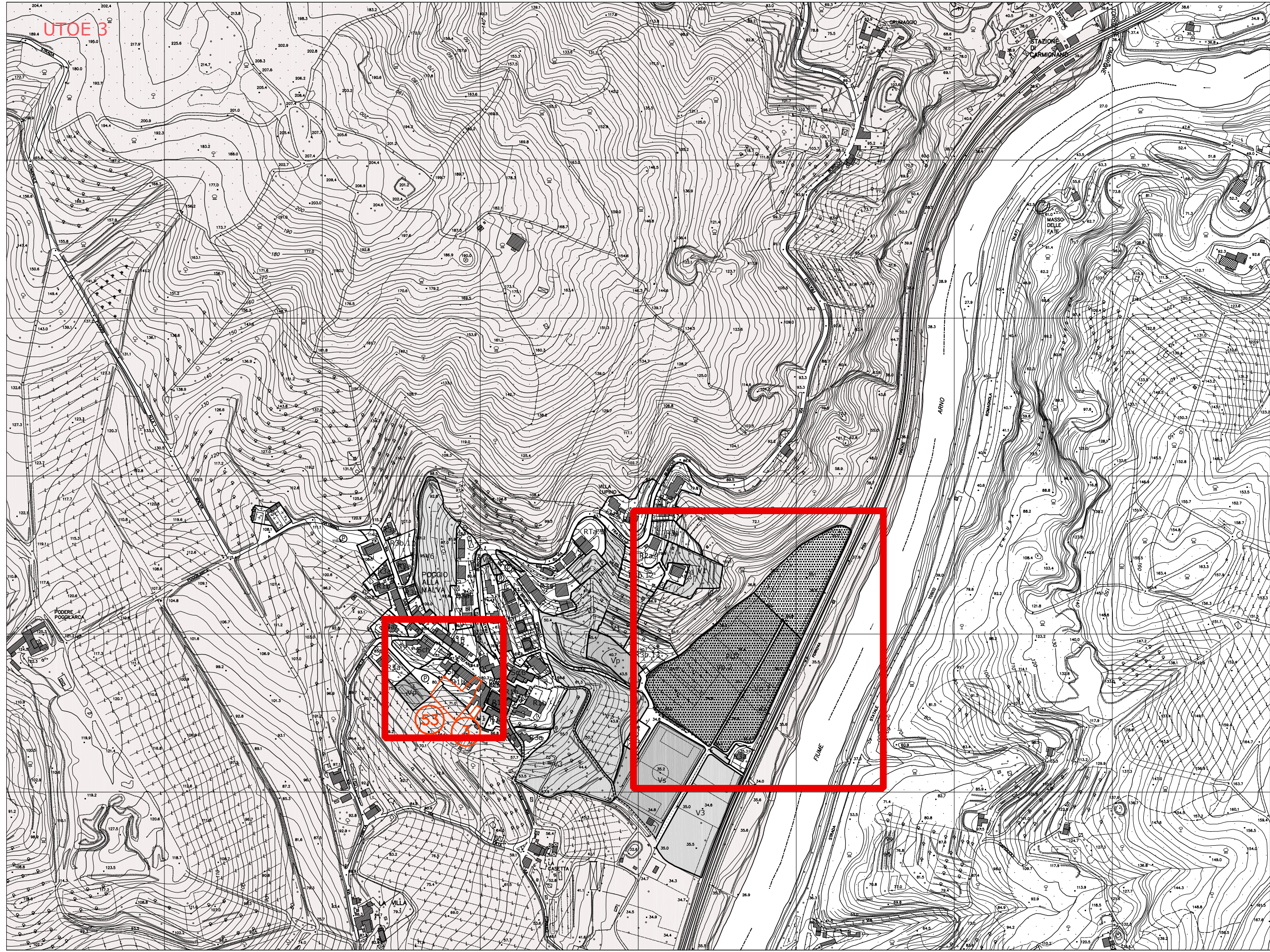
UTOE 2

UTOE 6

UTOE 3

UTOE 6

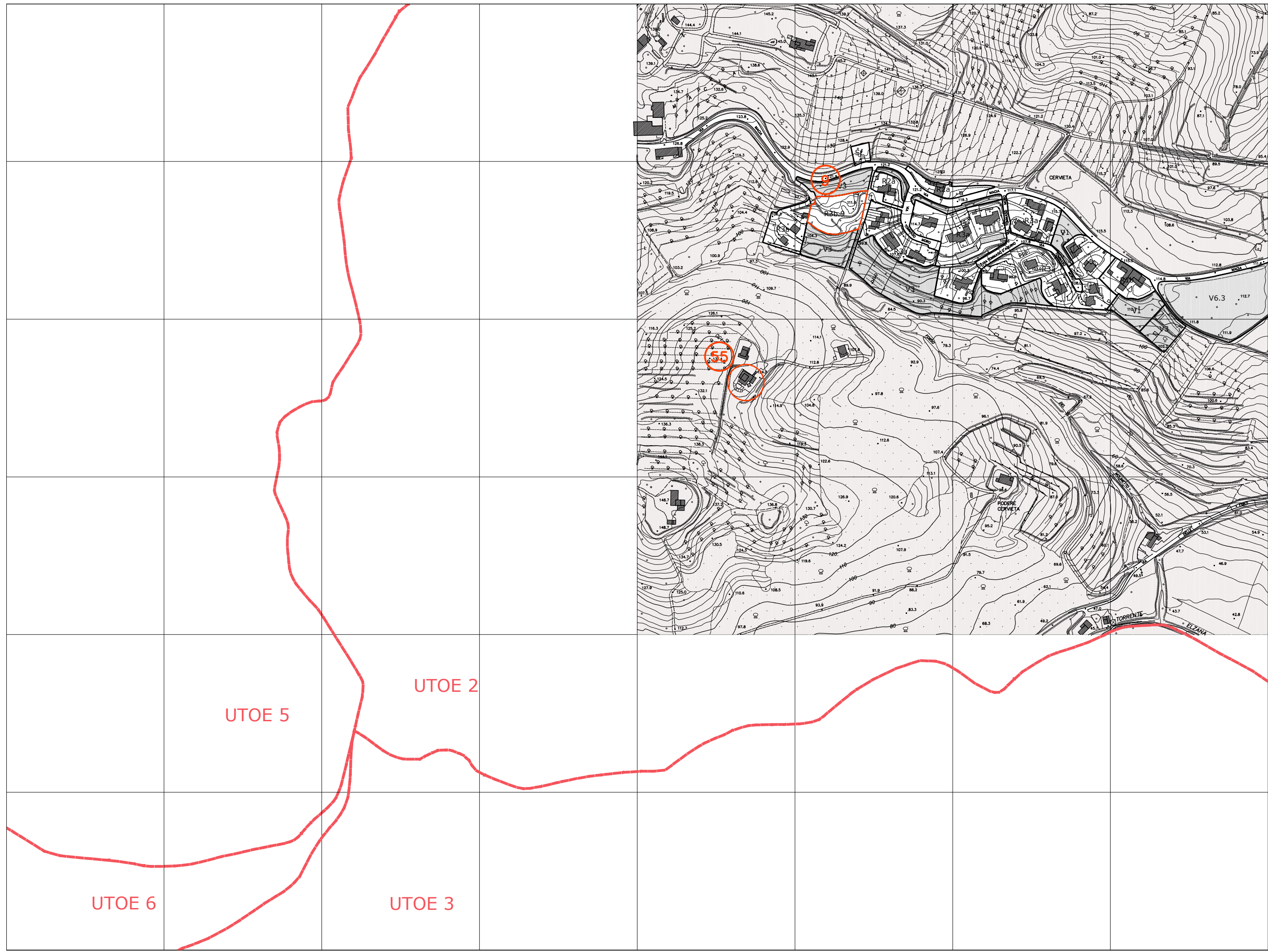


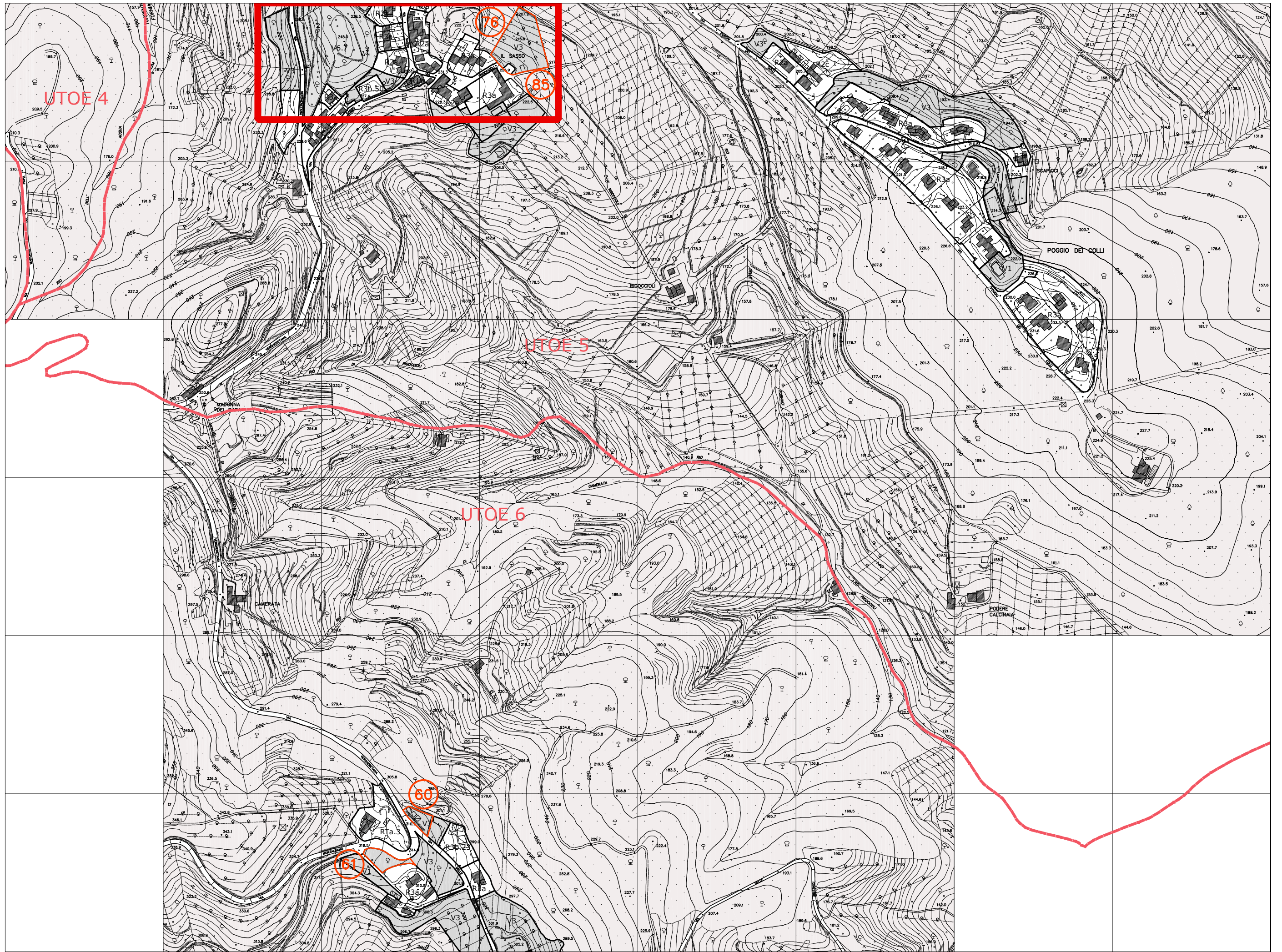


UTOE 3

fuori scala

P16 - PONTE ALLA MALVA





UTOE 4

UTOE 5

UTOE 6

76

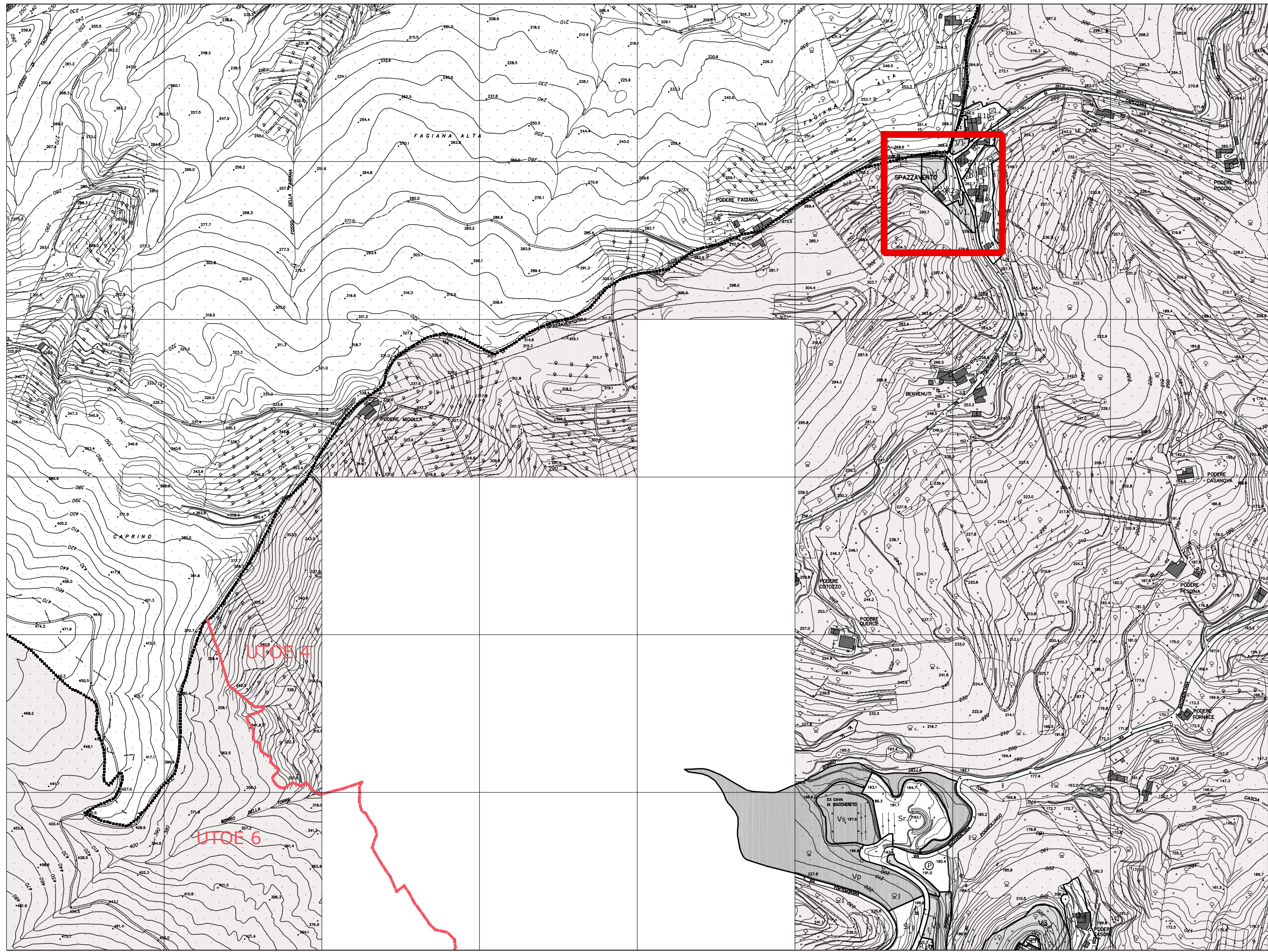
85

60

61

fuori scala

RU - P18 - S.CRISTINA - POGGIO DEI COLLI



UTOE 4

UTOE 6

