

COMUNE DI CARMIGNANO

REGOLAMENTO URBANISTICO ADOTTATO CON D.C.C. N. 47/2013

INDIVIDUAZIONE DELLE OSSERVAZIONI PRESENTATE

RESPONSABILE DEL PROCEDIMENTO
Dott. Ing. Leonardo Mastropieri

CONSULENTI
Dott. Arch. Bianca Ballestrero
Dott. Arch. Alessandro Bertini



Gennaio 2015

LEGENDA



Perimetrazione dell'osservazione



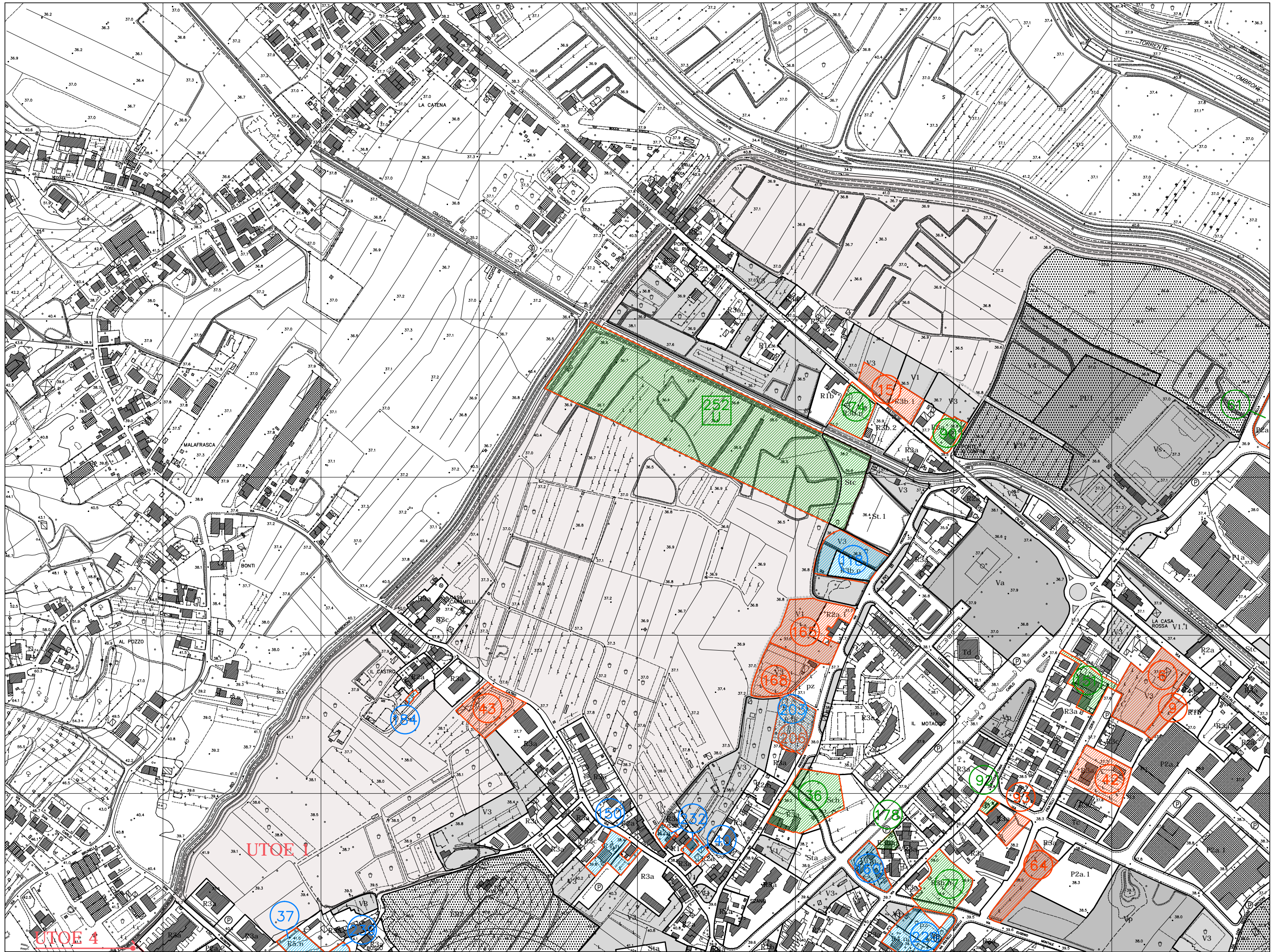
Osservazioni accolte



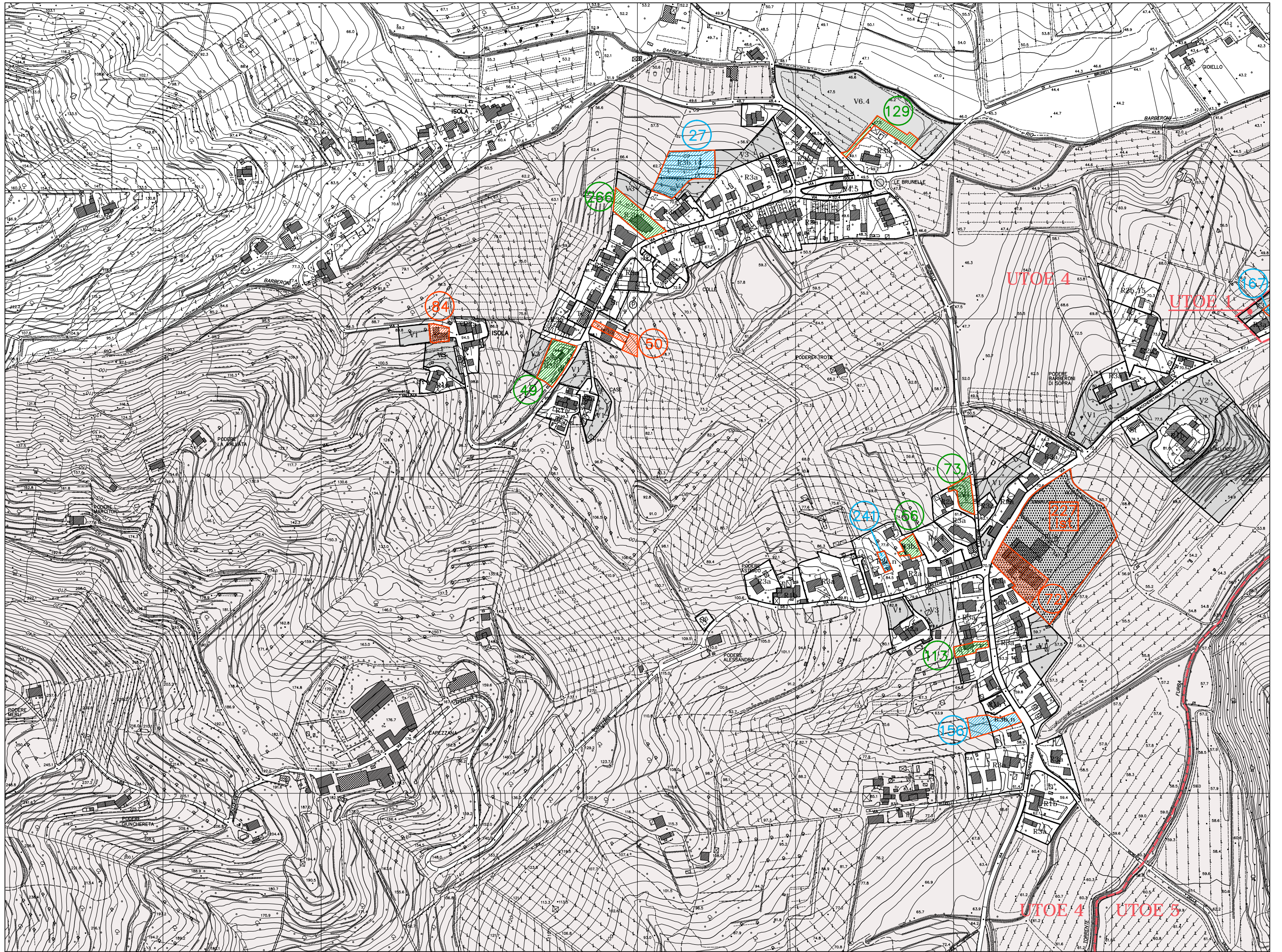
Osservazioni parzialmente accolte

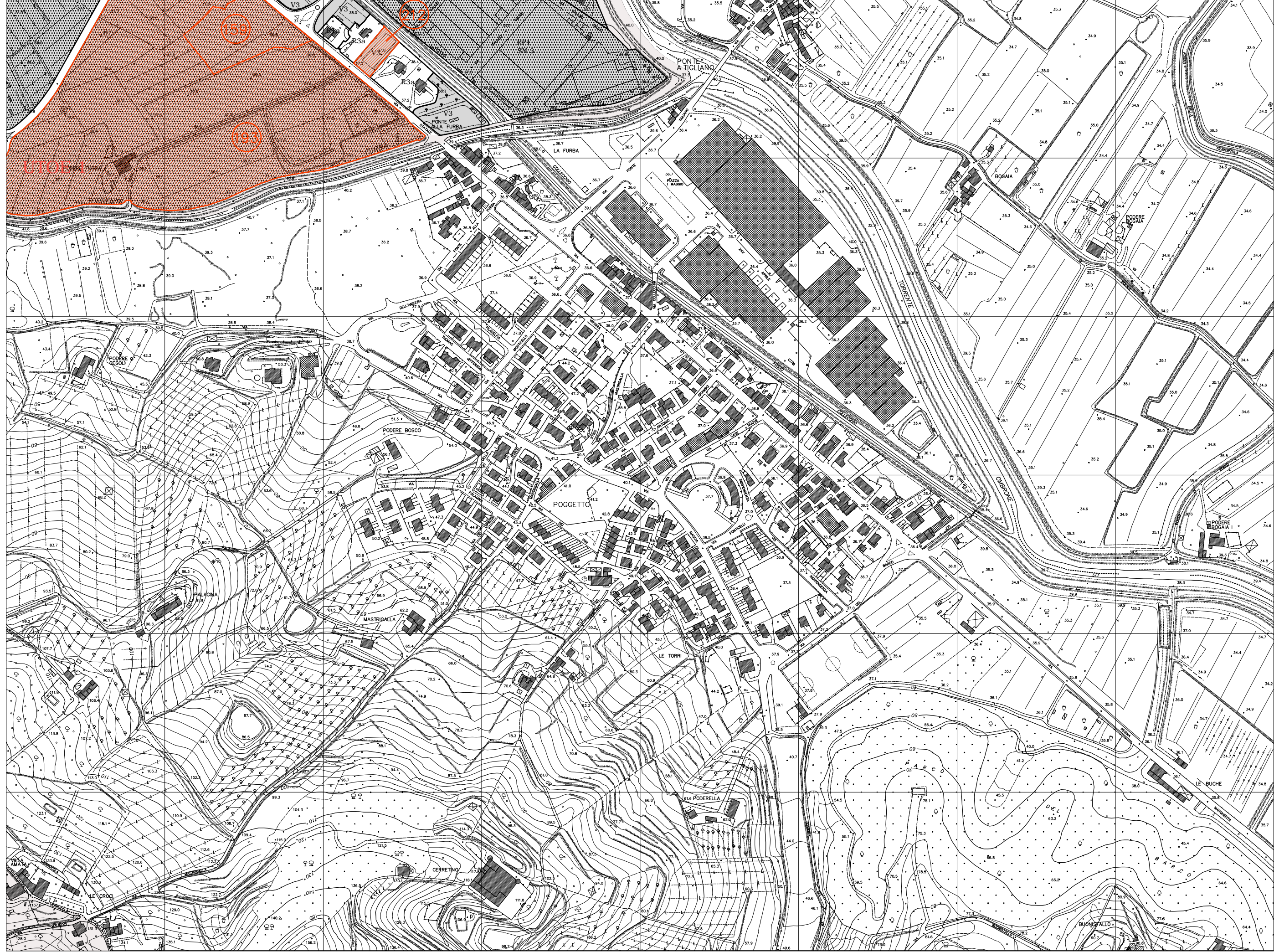


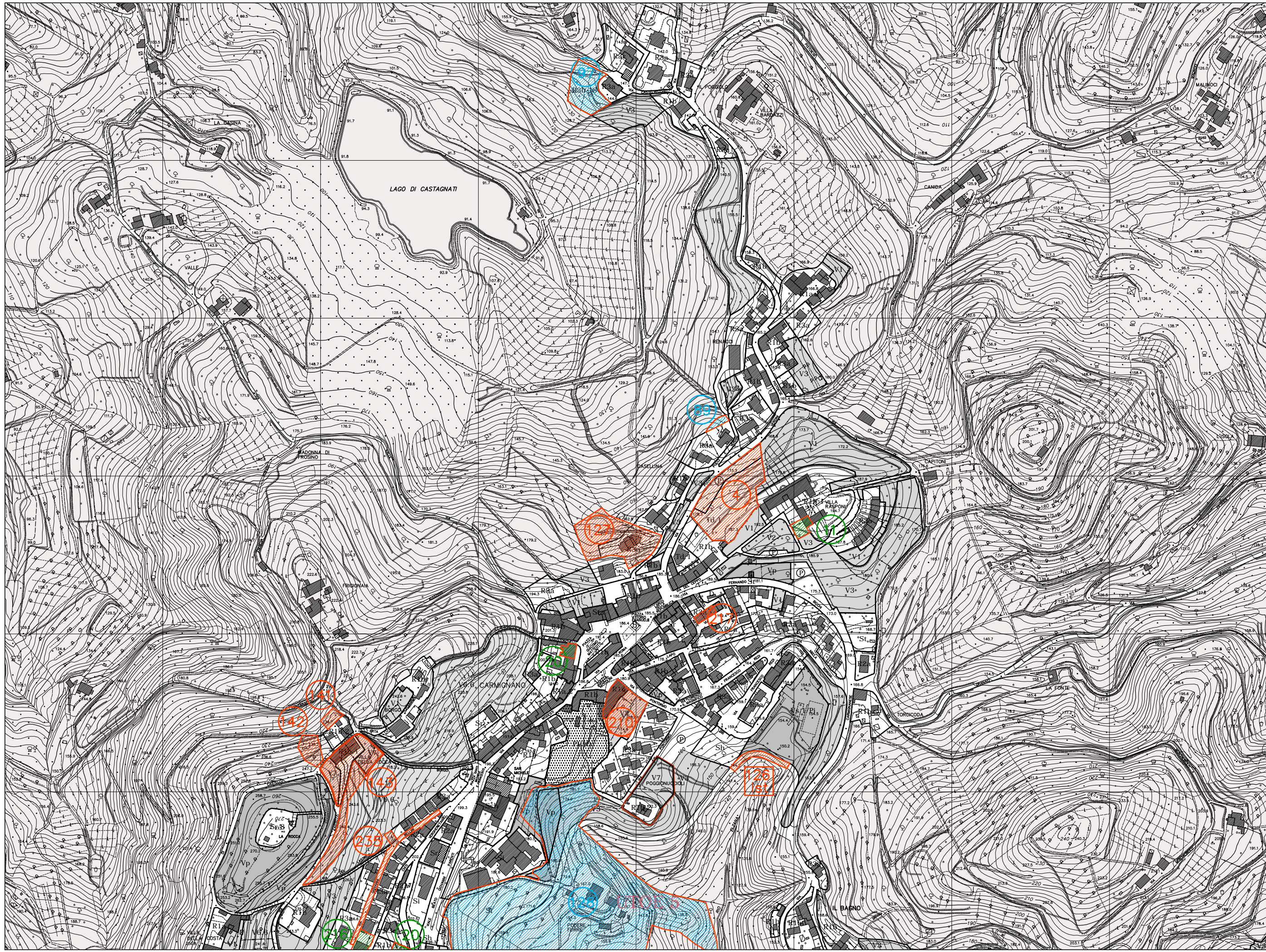
Osservazioni non accolte



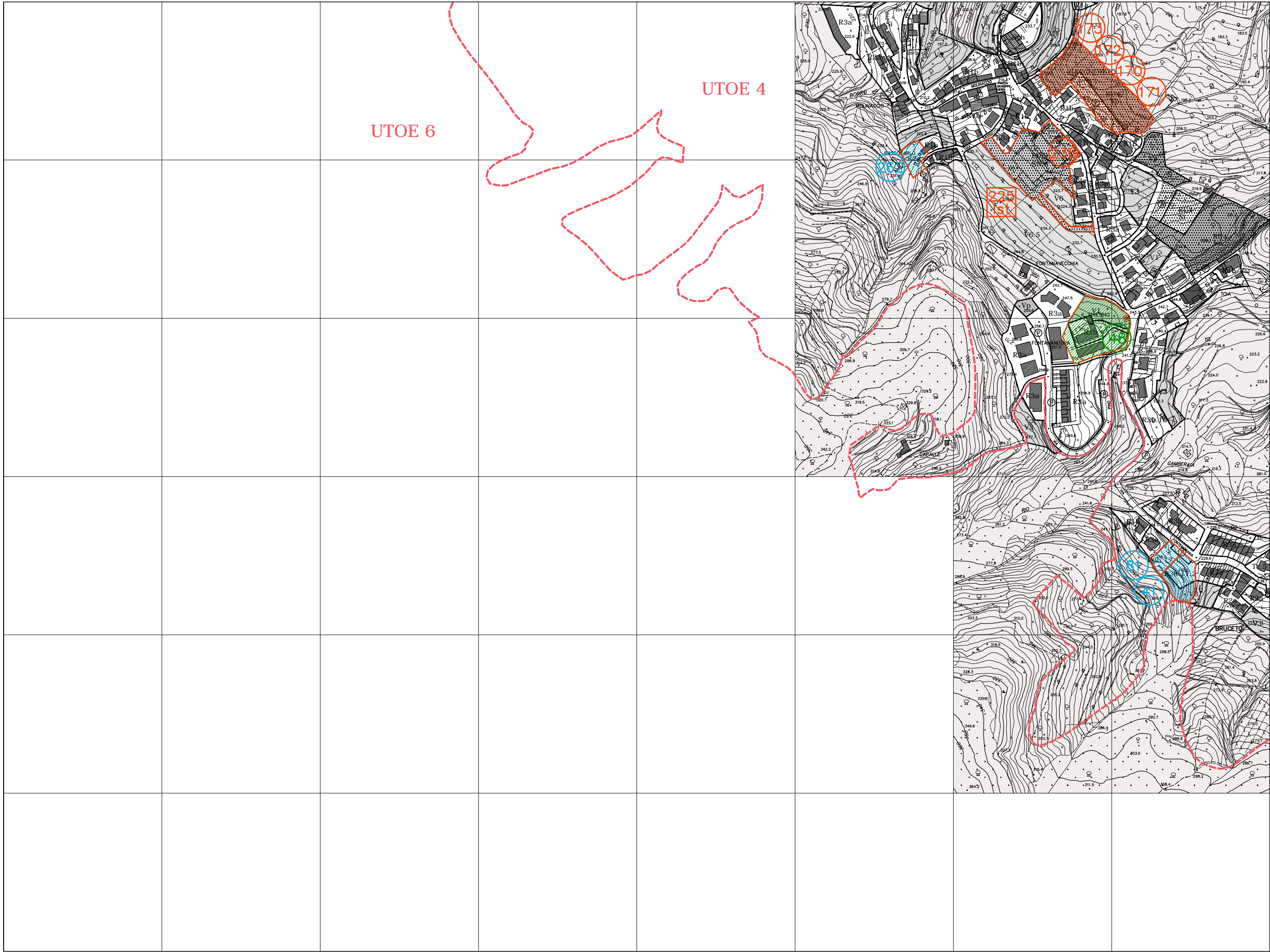










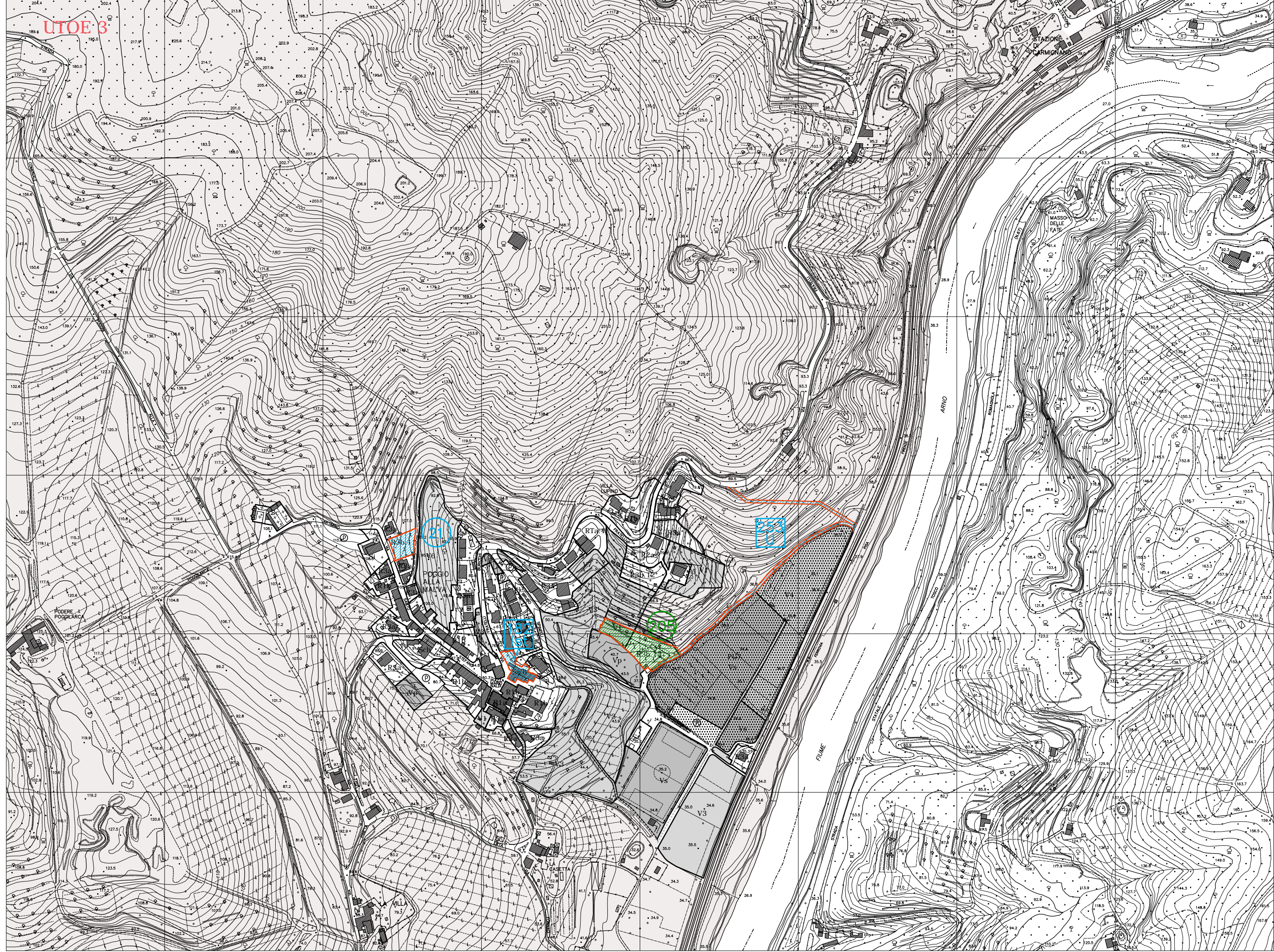


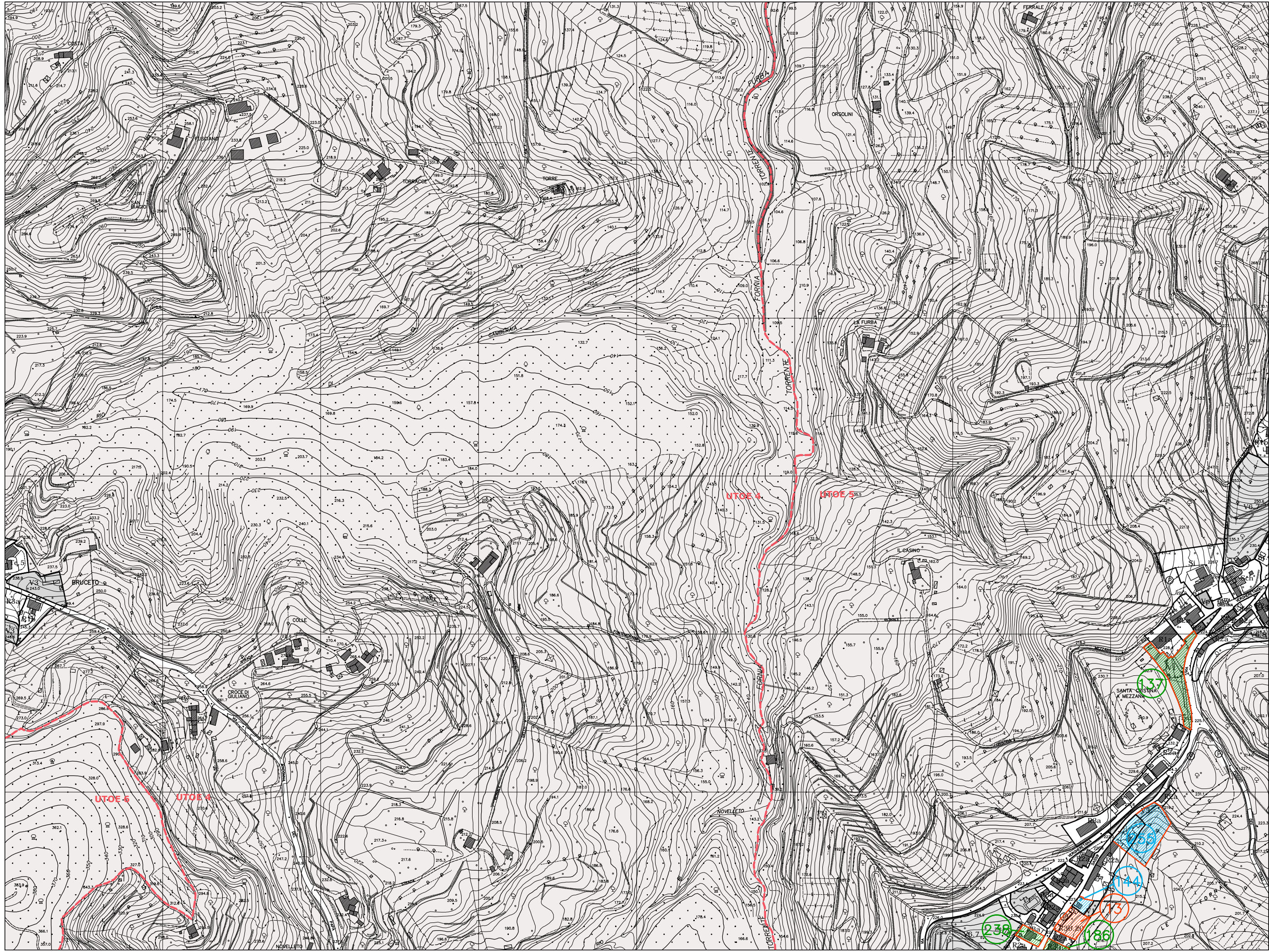
UTOE 6

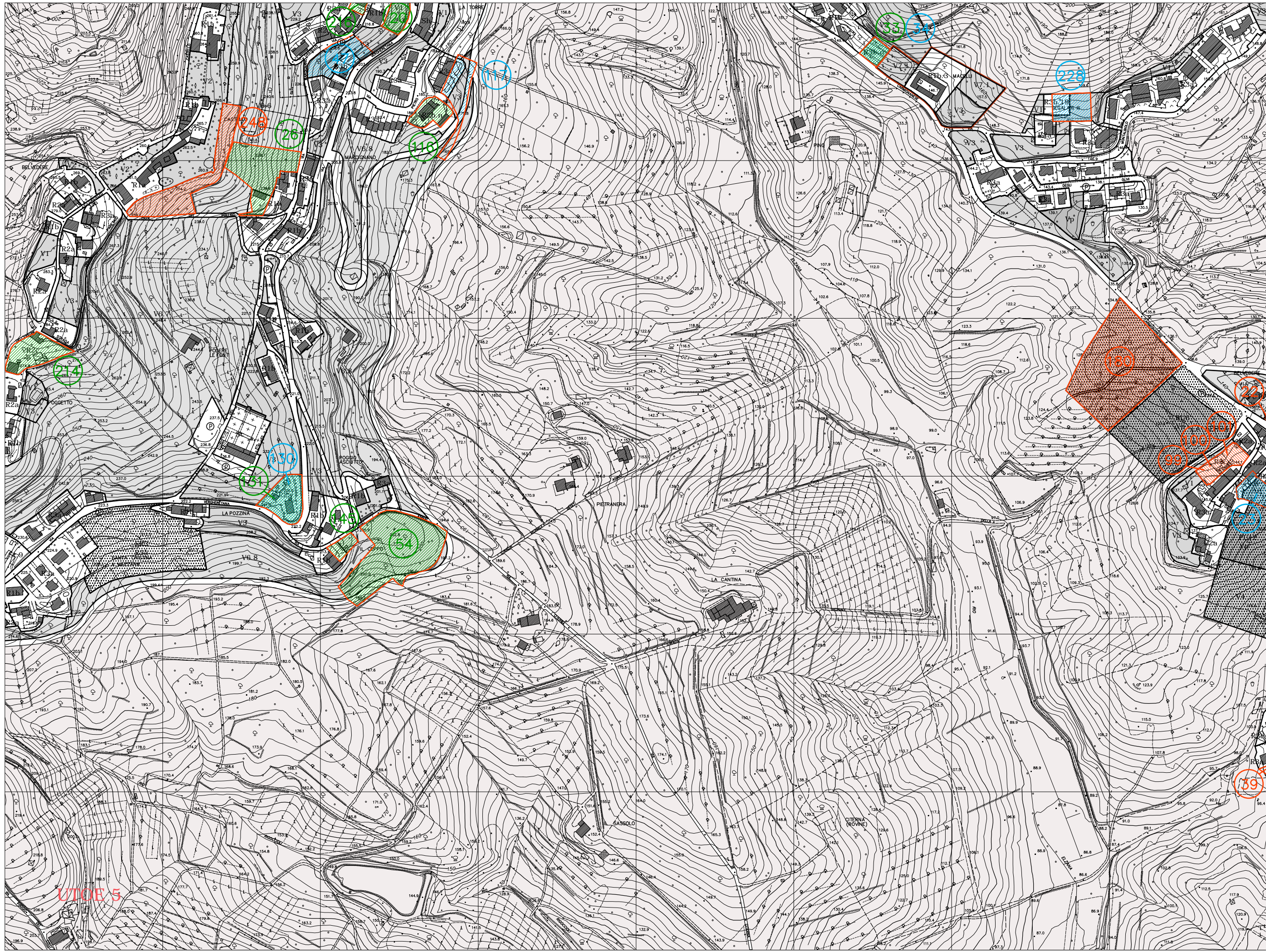
UTOE 4

fuori scala

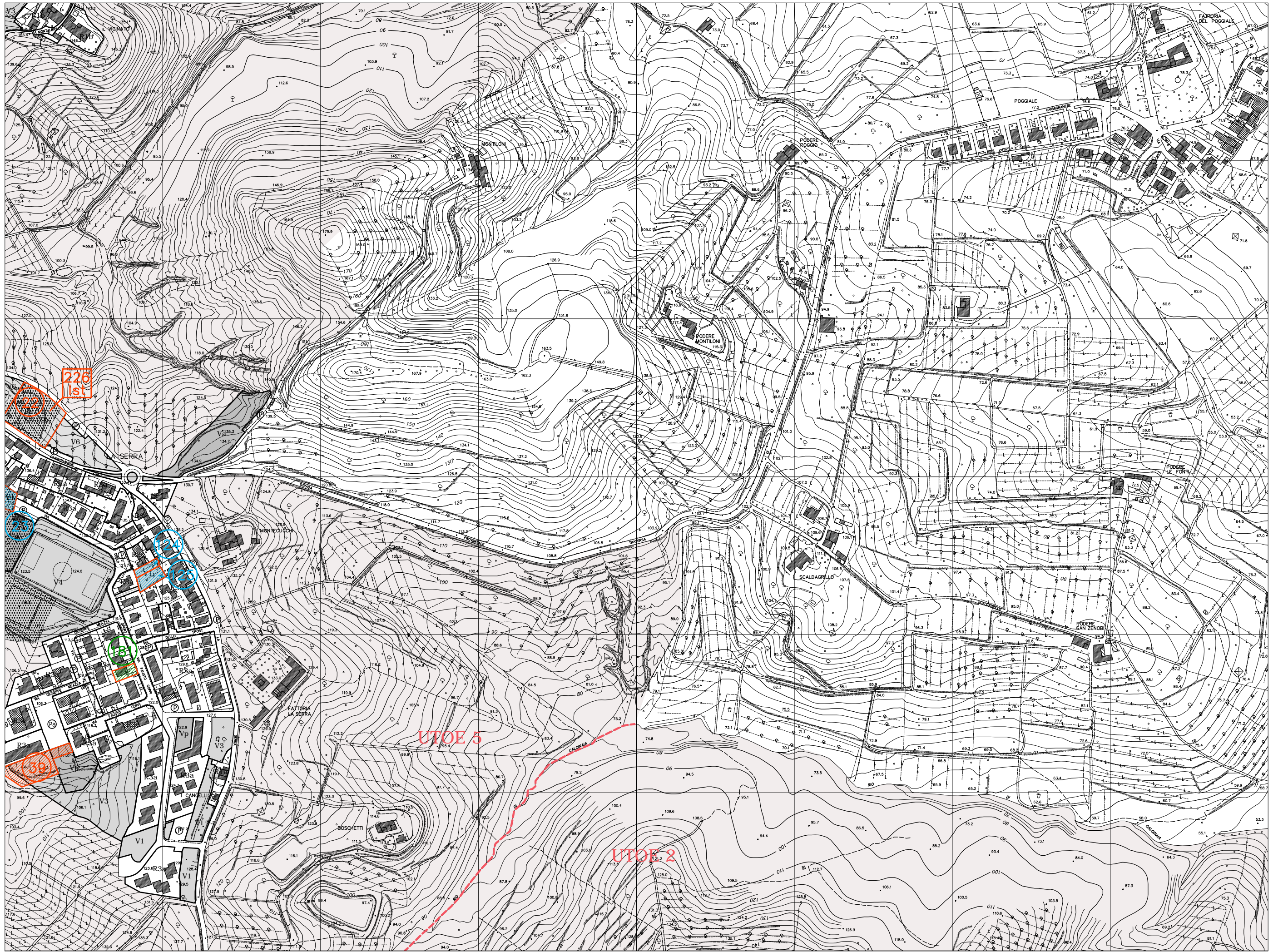
P08 - BACCHERETO





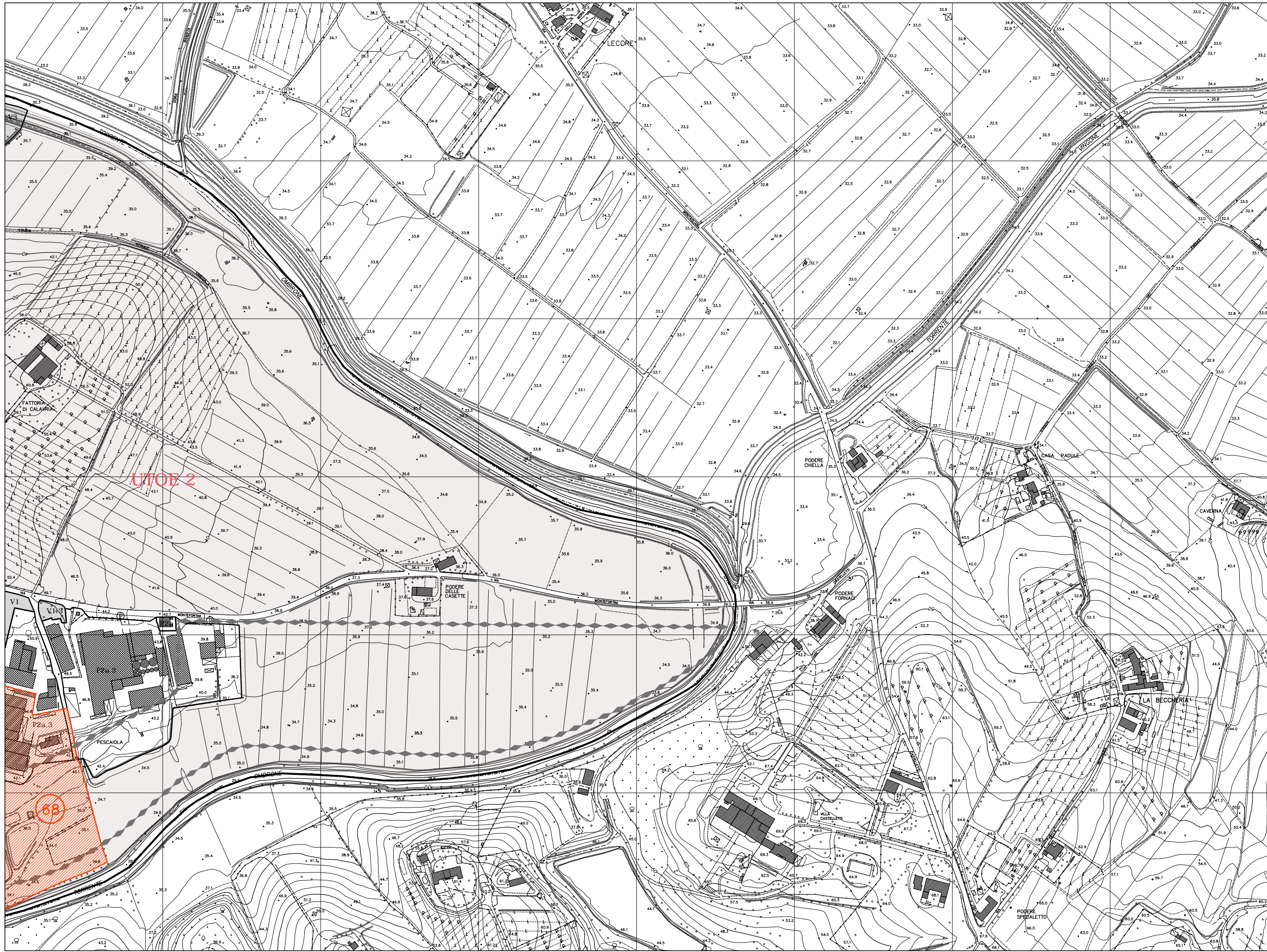


UTILE 5

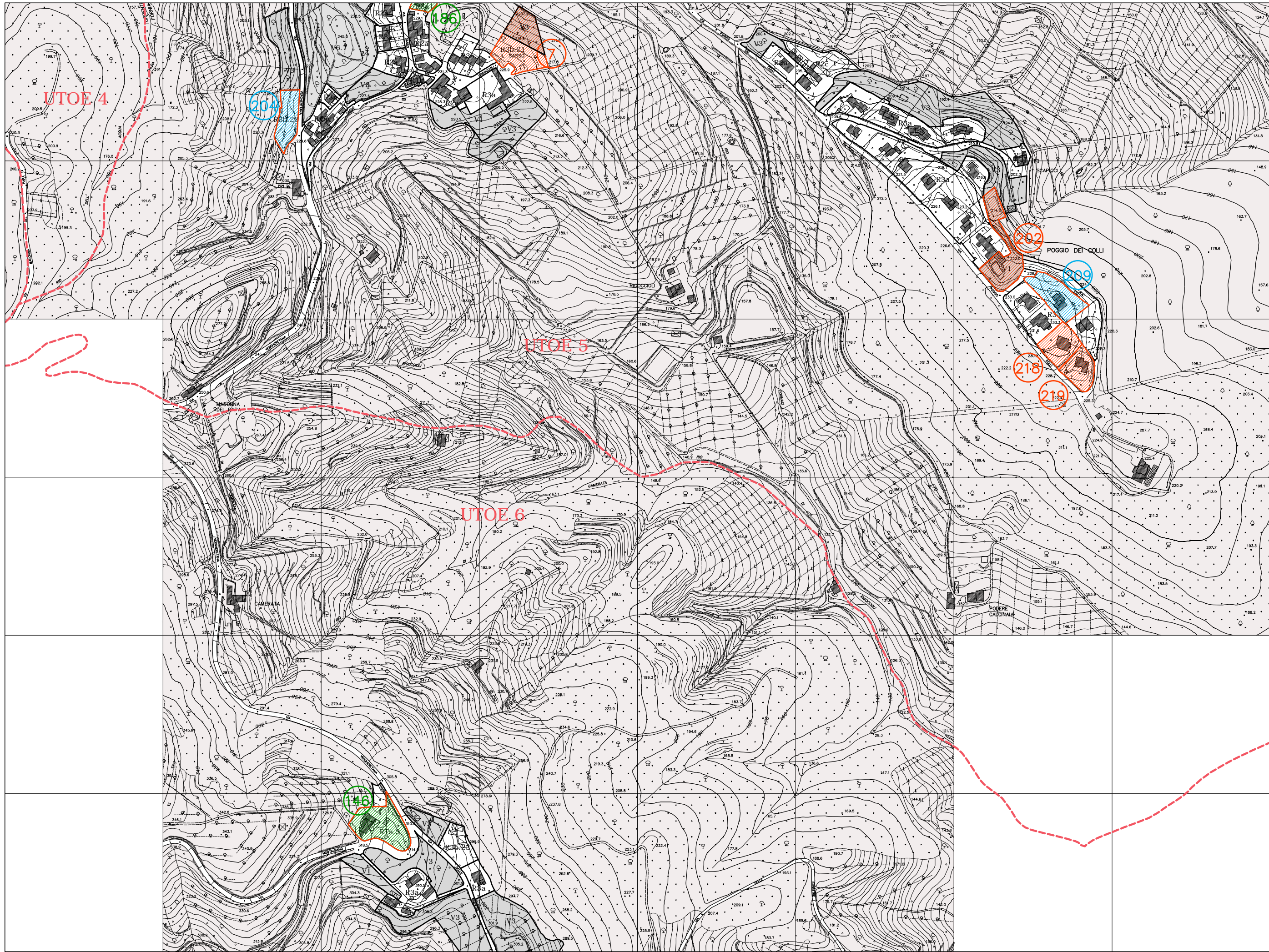


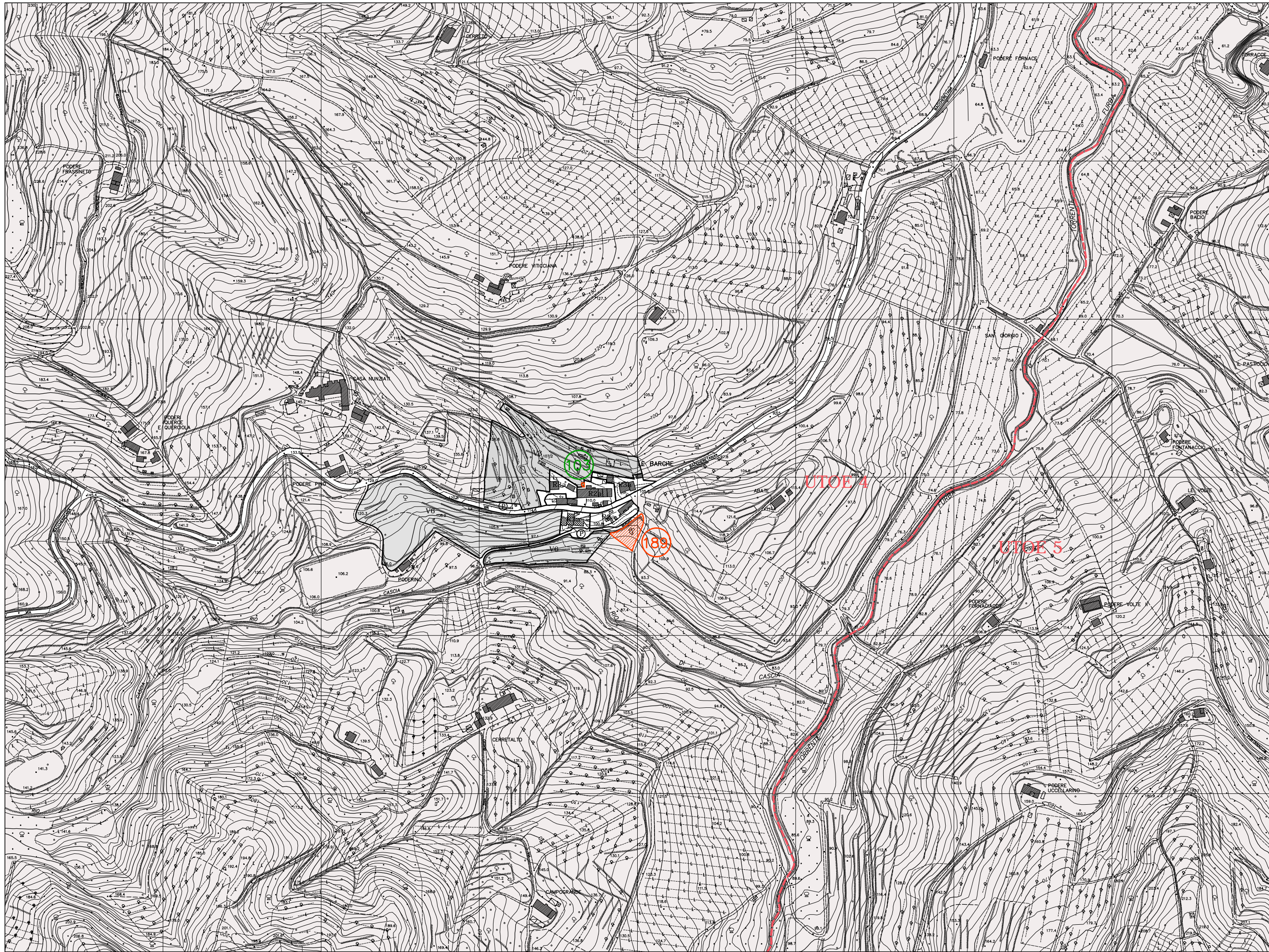
UTOE 5

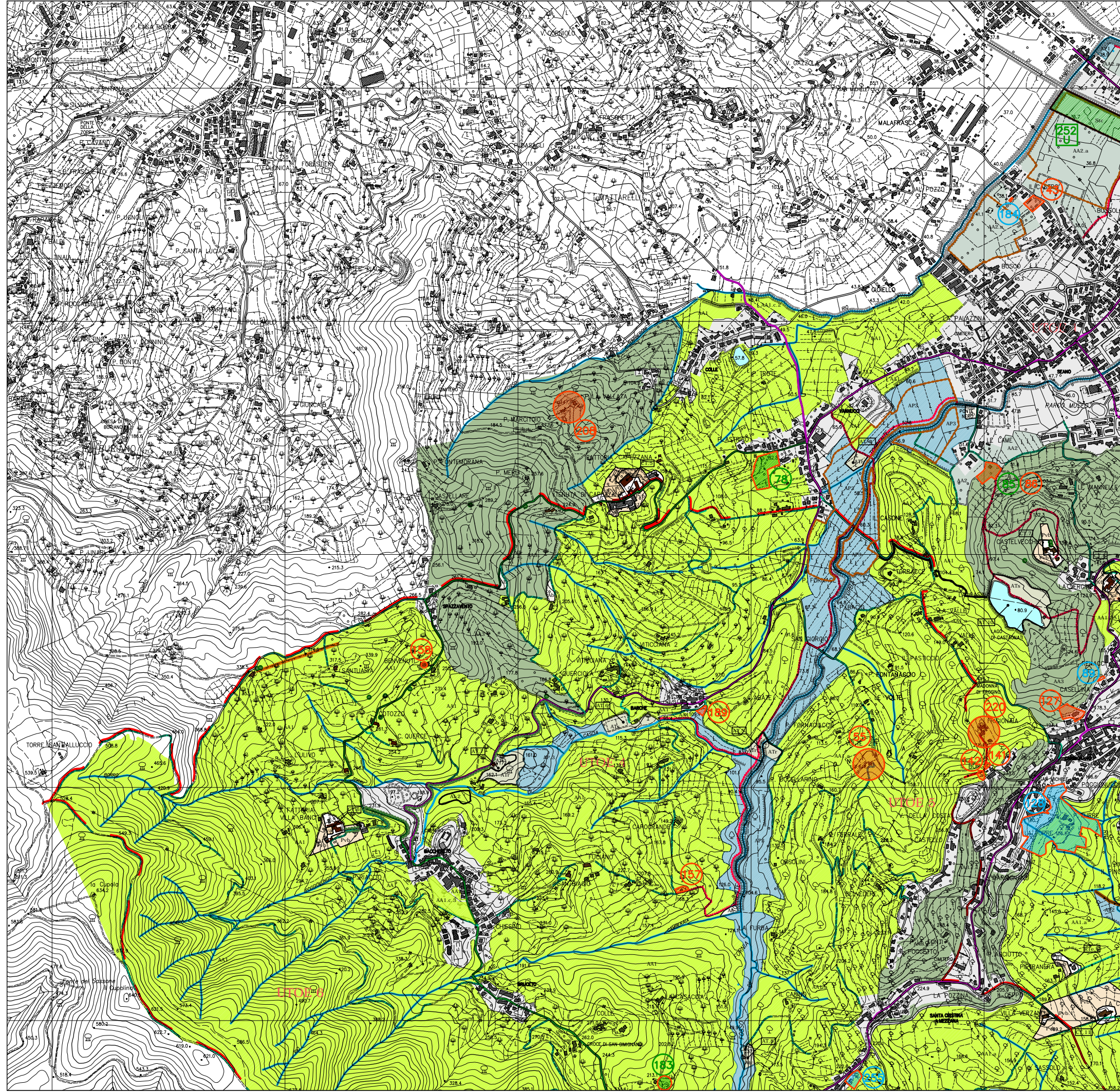
UTOE 2











TAV A - SETTORE NORD OVEST

fuori scala

